

SUCCESSFUL KIND
CONFIDENT INDIVIDUAL
ENTHUSIASTIC ASPIRATIONAL
CURIOUS
COMMUNITY SUPPORTIVE
RESILIENT GLOBAL CITIZEN

SENIOR SCHOOL





WELCOME

An introduction from Miss Katrina Handford, Head.



As Head of Kent College, I have the best job in the world! What a privilege it is to be part of helping to unlock the potential of all and watch our young people grow into confident young adults. At Kent College, all the staff have high aspirations for the students, walking alongside them on their journeys to success. Be it academics, sport, music, drama, art, or whatever field they choose, we recognise the unique strengths of every individual, creating an environment of support and challenge to aid their pursuit of excellence. I am so proud of this school because it ensures every pupil, whether 2 or 18 years of age, achieves above and beyond their potential.

Whatever their gifts, the environment and opportunities at Kent College provide the perfect setting to stretch and champion everyone to thrive.

We are an ISI 'Excellent' school which will be fully co-educational in Prep, Senior and Sixth Form from September 2026 with opportunities for full, weekly or flexi boarding from Year 7. All our families and visitors comment on the warmth of our community spirit, stemming from being a Methodist school which promotes an ethos of kindness, community and inclusive nurturing where we support each other to be the best we can be. This environment sees our young people grow into kind, compassionate individuals who know their own strengths and how they can positively contribute to the world around them, as purposeful global citizens.

Of course, excellent teaching and learning, a flexible curriculum and fantastic facilities are a given, and create the perfect conditions to help all the wonderful individuals here, each with their own characters, personalities and strengths, to be able to learn and grow. I warmly invite you to visit Kent College to see the magic for yourself.

Miss Katrina Handford - Head



ABOUT US

OUR VISION

To unlock the potential of all.

OUR AIMS

To nurture, value and celebrate each individual.

To create an aspirational environment in which intellectual curiosity can flourish in order to maximise the academic achievement of all.

To promote the Methodist value of 'doing all the good you can' and inspiring all to make purposeful contributions as global citizens.

OUR VALUES

Individual excellence is at the heart of our community. We value:

ACHIEVEMENT

SUPPORT FOR ALL

PURPOSEFUL CITIZENSHIP

INDIVIDUALITY

RELIABILITY, RESPECT, RESILIENCE

ENQUIRING AND CREATIVE MINDS



ACHIEVEMENT **S**UPPORT FOR ALL **P**URPOSEFUL CITIZENSHIP **I**NDIVIDUALITY **R**ELIABILITY, RESPECT, RESILIENCE **E**NQUIRING & CREATIVE MINDS



A METHODIST SCHOOL

Kent College is one of a group of schools within the Methodist Independent Schools Trust (MIST). MIST is responsible for 8 schools, and also actively works with 3 Associated Schools and 3 Affiliated Schools in England/Wales. MIST is affiliated with 2 international schools based in Dubai and West Cairo providing a high quality, rounded and caring education.

Methodist Schools are inclusive and welcoming communities where individuals are valued, good order is respected, relationships cherished, and where excellence in its widest sense is pursued.

'Do all the good you can' – the opening of a prayer by our Methodist founder John Wesley – resonates deeply with us. Kent College pupils and staff experience community strength, non-judgmental understanding, support structures and respect.



ISI 'EXCELLENT' SCHOOL

The school underwent a full inspection by the Independent Schools Inspectorate in June 2023 and was found to be 'Excellent' in all areas. The reports can be found on our website at www.kent-college.co.uk.

"Pupils are highly confident and well prepared for the next stage of their lives."

ISI 2023

UNLOCKING THE POTENTIAL OF ALL



Kent College Pembury is a school which ensures every student, succeeds above and beyond their potential. Whatever a student's strength, the environment and opportunities at Kent College provide the perfect setting to stretch, challenge and champion them to thrive.

“Pupils have exceptionally positive attitudes to all aspects of their learning. They have a ‘can do’ attitude and persevere at all ages.”

ISI 2023

We are an inclusive, gently selective school with a broad ability range. We take pride in knowing each and every student, and believe that no matter the academic starting point, the resilience we build, care we give and the appetite our students have to rise to challenges, leads them to succeeding in ways they could never have imagined.

Our high-flying students are inspired to excel in a safe and supportive environment. The most academically able will be stretched and challenged through our Able, Interested and Motivated (AIM) Programme. Students with SEN will be supported in the classroom, and our Supported Learning Programme will equip them with the skills to gain confidence and succeed at the highest level.

Our GCSE and A Level results are excellent, but grades only tell so much. Behind each personal achievement is a story of challenge, belief, effort and growth. Most significant is the progress that students make at Kent College, where results surpass nationally standardised predictions. Many students achieve at least one grade higher than predicted in each of their GCSE subjects, which places us as one of the leading schools in the UK for Valued Added.

Years 7 and 8

Our Year 7 and 8 curricula offer a broad, rigorous but also enjoyable introduction to secondary study. All of our staff are specialists and experts in their field, who want their students to give everything a go and not typecast themselves or see limitations. Every student is, thus, provided with a very firm grounding in Maths, English and the separate sciences. However, we also want our students to experience a very wide range of subjects: from the traditional languages (including Latin in Year 8) to future focused studies, such as Computer Science or our unique Engineering and Global Citizenship courses. Innovative students can also truly excel, through exceptional teaching in the performing and creative arts, such as in Art and Design, Food Technology, Music and Drama lessons. PE and Sport are also a central part of our Lower School curriculum, ensuring that many of our students are able to perform at the highest level.

Year 9

In Year 9 we start to give students some choice over their timetable. Alongside their core subjects they will select two language options from French, Spanish, Latin and Classics, and two arts options from Art, Food Technology, Music and Textiles. Drama and Dance or Computer Science can also be selected. Examinations are held at the end of the year.

In addition students will complete their Global Citizenship Diploma, which draws together a range of subjects. For this diploma pupils will be awarded either Pass, Merit or Distinction.

Year 10 and 11

Alongside a traditional core of academic subjects, students at Kent College have access to a wide range of GCSE and IGCSE options to meet every interest.

Students choose a balanced range of subjects and we recommend at least one language, one humanity and one technology-based or arts subject. Students generally select four option subjects bringing their chosen GCSE

subjects to ten. There are currently 17 option subjects to choose from, with Astronomy, Classical Greek and Further Maths taught off timetable.

Small class sizes, a personalised offer and additional study options, ensure that all students have the opportunity to achieve the very best grades.

Sixth Form

Most of our students continue into the Sixth Form where we offer a wide range of academic choices and a robust extra-curricular programme to build a strong foundation for future careers and studies.

At Kent College, students can choose from 21 A Levels and 9 BTECs in subjects such as, Medical Science, Criminology, Marketing and Information Technology.

Our Sixth Form Offer is engaging and practical, providing opportunities to develop workplace and leadership skills through initiatives such as Ivy House and Accounting Club. Students can become peer mentors or delve into academic interests with the Extended Project Qualification (EPQ), the Gold Crest Award in STEM, or a foreign language business qualification. We endeavour to encourage each individual to broaden their horizons and fully develop the many skills which are essential for life beyond school.

Each year, we see our Sixth Form students achieve excellent results with the significant majority leaving to join their first choice university.

Further information about all the subjects we offer at GCSE and A Level can be found on our website.



PASTORAL

The Hub

Pastoral care at Kent College is dedicated to building a supportive and inclusive environment where every student feels valued, respected, and empowered. Rooted in strong relationships among students, parents, teachers, and support staff, we aim to nurture and guide each student collaboratively.

Our experienced pastoral team, comprising the Deputy Head Pastoral, Head of Sixth Form, Pastoral Lead, two Student Managers, SENCo, Chaplain, School Sister and two School Counsellors provides personalised support tailored to individual needs. Regular check-ins, one-on-one sessions,

and group activities encourage open communication and trust, ensuring every student's voice is heard and their needs are addressed.

Students have a dedicated communal space, The Hub, at the centre of the school site. This is for use at break and lunchtimes, and designed to be a relaxed and informal environment.

Student wellbeing is a core priority. We actively promote mental health awareness and offer access to counselling services and resources, equipping students to overcome challenges, build resilience, and develop essential life skills.

To enhance the sense of community, we organise initiatives such as peer mentoring programmes, student-led mental health projects, anti-bullying ambassadors, and community events. These efforts create meaningful connections across the school and develop positive relationships within and between year groups, helping students build a strong, supportive network that extends beyond the classroom.

“Pupils exhibit a sense of personal responsibility for their actions and display positive behaviour towards others, such as empathy, kindness and respect.”

ISI 2023



GLOBAL CITIZENSHIP

Kent College is proud to have a Global Citizenship curriculum for Years 7–9. It is taught around five key themes: Identity and Diversity; Human Rights and Social Justice; Peace and Conflict; Globalisation and Interdependence; and Sustainable Development.

DEVELOPING SKILLS AND VALUES FOR THE FUTURE

Global Citizenship education is future focused, enabling students to develop the skills and values to equip themselves as twenty-first century learners who can adapt and respond to our complex, globalised world.

Through our Global Citizenship Programme, students are able to identify the links between their curriculum subjects, recognising their real-world relevance. In addition, students learn to appreciate difference and complexity, developing an open mind to a wide range of perspectives and world views. They are encouraged to be respectful, tolerant, optimistic and are empowered to engage with key global issues and

questions. Students also develop a wide range of essential academic and employability skills, with a strong focus on communication, teamwork, empathy, problem solving, and critical thinking.

Students work towards attaining their Global Citizenship Diploma at the end of Year 9. This is awarded based on a range of tasks and projects from both Global Citizenship lessons as well as through cross-curricular tasks from English, Maths, Science, History and Geography, and through community and leadership activities.

GLOBAL CITIZENSHIP THROUGHOUT THE SCHOOL

Being a Global Citizen is a part of the culture and ethos of Kent College, and we develop this beyond the academic curriculum through community engagement, charity work and international trips focused on the Global Citizenship themes.





Sport is a vital part of life at Kent College, helping to develop well-rounded, confident individuals through a rich and balanced programme of physical activity consisting of PE lessons, team sport training, fixtures and weekly sport.

We offer a sport for everyone, whether our students are top-performing athletes or simply want to have a go, all led by highly qualified, specialist teachers using our exceptional facilities.

Kent College teams compete in local, regional and national school competitions and have weekly matches against local schools.

We have teams competing in, netball, football, hockey, swimming, cross-country, cricket, athletics, gymnastics, tennis, rugby and equestrian. In addition we have strong links with local clubs in these sports too.

Team trials are held at the start of each term, with matches and training sessions taking place on Saturdays and weekdays. We have individual students performing at county, regional and national level.





STEM

Science at Kent College provides a hands-on, practical approach to learning across all three science disciplines. In Year 7, students explore the foundations of Biology, Chemistry, and Physics, and from Year 8 onwards, they benefit from subject-specialist teaching. All students will study three separate science GCSEs, or the BTEC in Applied Science for a vocational pathway.

Our dynamic and engaging science programme inspires students both in the classroom and beyond. From participating in lessons to joining co-curricular activities such as STEM Club, Science Club and Turtle Club, there are many opportunities to nurture a love for science.

Additional STEM subjects offered at Kent College are Engineering, Computer Science and Food Technology, which are all taught as part of the Years 7-9 curriculum. Digital Information Technology can be taken as a Level 2 BTEC and we offer a GCSE in Food Preparation and Nutrition, for those who wish to study this subject further.



ARTS

CREATIVE ARTS

From our purpose-built spacious Art studios, students produce high quality work using a range of equipment, medium and materials. We offer painting, printmaking and ceramics and our students have access to a fully equipped kiln room.

In Textiles, students have expert tuition in both surface design and construction. The rooms have industry standard sewing machines and sublimation printing facilities. The department also runs the annual national competition, Young Fashion Designer UK which students are encouraged to enter.

Art and Textiles are curriculum subjects in Years 7 and 8, and can be chosen for study in Year 9 and GCSE.



PERFORMING ARTS

The Performing Arts is at the heart of Kent College school life and is accessible to all. From starring in professional standard productions, being part of a sleek dance troupe or singing in choir competitions in the Royal Festival Hall, to designing costumes or being part of the technical crew, the Performing Arts at Kent College offers many opportunities for students of all ages and abilities to get involved.

In Drama, students from across the school take part in the whole school production each year which has included shows such as Phantom of the Opera and Sweeney Todd. Those in KS3 have the opportunity to take part in the Lower School summer production, the most recent being Matilda. Performances take place in the Countess of Wessex Theatre (named after the now Duchess of Edinburgh and Kent College Old Girl) which is a modern 210 seat venue with a large stage, orchestra pit and professional technical control box. Showcases, masterclasses and theatre trips are also available for interested students.

Dance is part of the curriculum from Year 7 where students explore a variety of styles. Beyond the classroom, students can participate in extra-curricular clubs for Ballet, Contemporary Dance, Street Dance, and a Junior Dance Company. The annual Dance Showcase is a superb celebration of dance talent from across the school and is a wonderful opportunity for students to develop their technical skills, performance skills and confidence in front of an audience.

Music gives all students the chance to shine through non-auditioned and auditioned groups from Pop Band to Chamber Choir. It is taught in our dedicated Music Centre which houses a recording studio, specialist teaching and practice rooms, and a state-of-the-art computer suite with sound equipment, software and keyboards. Musicians take part in our whole school concert each year featuring students as young as three playing and singing alongside senior students and professionals. The Music department works closely with the Drama and Dance departments to stage a musical each year, alternating between whole school and KS3 productions. This is alongside regular concerts, masterclasses and tours. Students can also choose weekly tuition across almost any instrument, including singing.





CO-CURRICULAR

The co-curricular programme at Kent College is integral to the school curriculum, and provides opportunities for students to develop their skills, talents and interests across a broad range of activities including sports, visual and performing arts, technology, leadership and service. All students are encouraged to follow a balanced programme of academic work and co-curricular activities to develop their natural talents and passions in and outside the classroom.



We offer a large selection of clubs and activities led by staff members and qualified external coaches. Activities take place before school, during lunch and after school, with some weekend commitments.

Types of clubs include:

SPORT AND FITNESS

Hockey, Netball, Cricket, Gymnastics and Swimming.

STEM

STEM Club, Science Club, Turtle Club.

CREATIVE ARTS

Art Club, Photography Club, Textiles Club.

PERFORMING ARTS

Chamber Choir, Choir, Pop Band, Orchestra, Drama, Technical Theatre, Ballet, Jazz, Contemporary and Street Dance.

CULTURE AND LEADERSHIP

Classics Club, Duke of Edinburgh, HALO.

WELLBEING

Anime, Chatterbox, Christian Club, Film Club, Memory Club, EDI Club, Wellbeing Waves.



BOARDING

Boarding at Kent College is a central part of school life and we welcome boarders from all over the world, as well as the UK. The boarding house is a home away from home, with a warm, friendly and family feel.

Our boarding house is modern and purpose built with spacious bedrooms, a large common room and fully equipped kitchens. The boarding facilities feature separate and secure living arrangements for boys and girls, comprising single-sex bedrooms, bathrooms, and toilets.

Boarders share in rooms of two and three. Older students may have their own room, some with an en-suite.

The boarding house is run by experienced staff including a house parent and assistant house parent, who are always on hand to provide encouragement, support and care.

We have an onsite medical centre, a dedicated pastoral team and two school counsellors who are there to help with our boarders' wellbeing.

A busy and varied after school and weekend programme is designed to be fun and relaxing. Trips and excursions take place throughout the term along with on-site workshops, cooking, crafting and cinema nights.

FULL BOARDING

Boarders stay at school for the full term with flexible exeats where they can remain at school for quiet study.

WEEKLY BOARDING

Boarders arrive at school on a Sunday night or Monday morning and remain until Friday for the duration of each term.

FLEXI BOARDING

Day students can stay from one to three nights a week on a regular or ad hoc basis.

DAY BOARDING

Day students can join boarders for activity evenings.

“Boarders collaborate well and progressively manage their study time more effectively due to the structured and supportive environment provided in the boarding houses.”

ISI 2023

LOCATION AND FACILITIES



Hawkwell Place

Kent College moved to its current location in Pembury in 1939, and the beautiful Victorian manor house is complemented by modern facilities including a science block, music school, art studios, 210 seat theatre, library, an indoor swimming pool, two sports halls, all weather astro pitch, fitness suite, outdoor confidence course, dance studio and boarding house.

The 75-acre rural site is surrounded by woodlands and is a peaceful, safe and secure place to learn and live. We are ten minutes from Tunbridge Wells, a spa town full of culture, and close to many historic attractions which makes for a rich and varied choice of weekend excursions for our boarders.



Sports Hall



Theatre



Art Balcony



Science Block



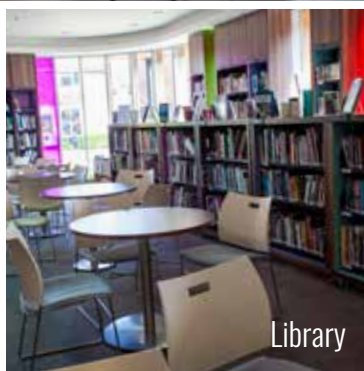
Art Room



Dining Hall



Library and Art Centre



Library



Outdoor Adventure Course



Wellbeing Hub



Swimming Pool



Fitness Suite



Organ Room



Grove Café



Music Block



Classroom



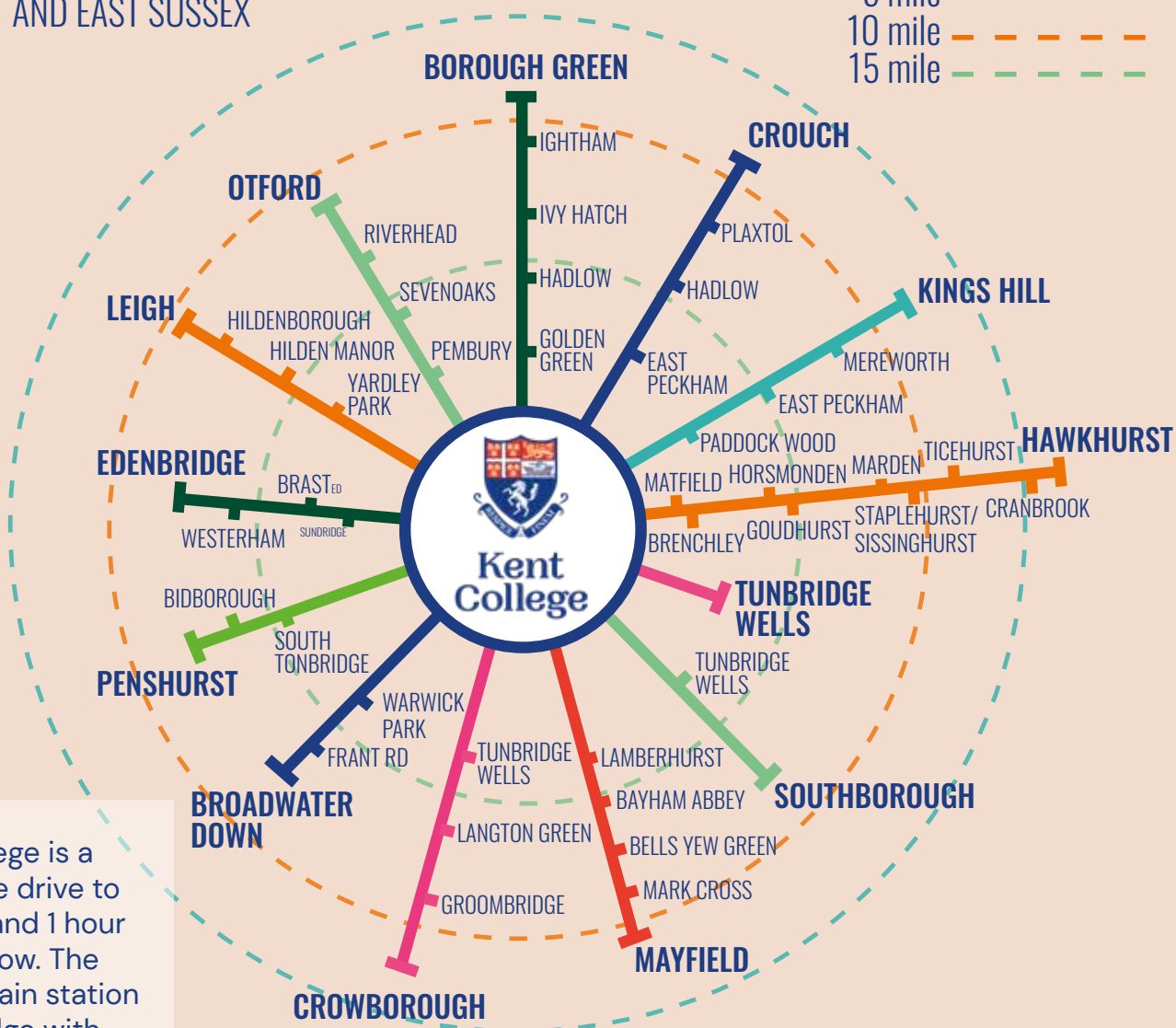
Sports Pitches

TRANSPORT

13 BUS ROUTES ACROSS
KENT AND EAST SUSSEX

PICK UP FROM MOST
RADIUS ZONES

5 mile ———
10 mile - - -
15 mile . . .



Kent College is a 45 minute drive to Gatwick and 1 hour to Heathrow. The closest train station is Tonbridge with a 35 minute journey to London.

Kent College minibuses run across Kent and East Sussex and can be booked termly in advance or used on an occasional basis.

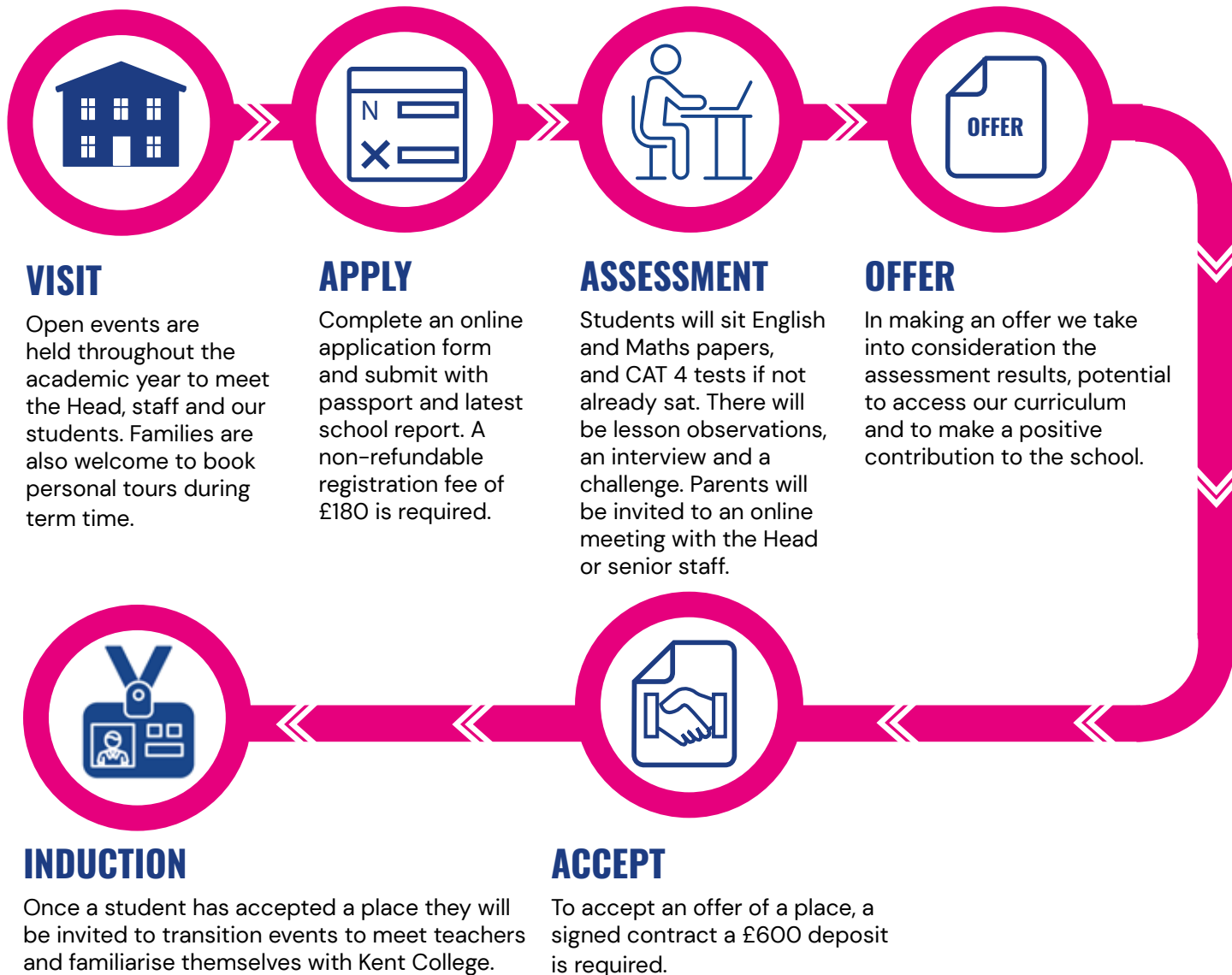
Students are dropped at school by 8.25am and buses leave at 4.30pm.

Two late buses leave Monday – Thursday at 5.30pm to the routes below.

Route A: Pembury, Tunbridge Wells, Southborough, Bidborough, Tonbridge, Hildenborough, Sevenoaks, Westerham, Edenbridge.

Route B: Matfield, Brenchley, Horsmonden, Marden, Staplehurst, Sissinghurst, Cranbrook, Goudhurst, Lamberhurst, Wadhurst, Mark Cross, Frant.

JOIN US



AWARDS

Scholarship and Exhibition awards are offered at Year 7, Year 9 and Sixth Form for Academic, Art, Dance, Drama, Music and Sport.

Each award is supported by an outstanding programme of supervision, mentoring, enhancement and extra-curricular activities, and our Scholar and Exhibitioners are expected to play an active and positive role amongst students and be ambassadors for their discipline.

Further information and the deadline to apply is published on our website.



BURSARIES AND DISCOUNTS

Support towards the payment of school fees is available through means tested bursary awards. These can only be applied for upon offer of a place. The deadline to apply is published on our website.

Families with two siblings enrolled at the same time receive a 5% reduction in fees for each child, while a 10% discount is granted for a third child.

For children of certain MOD personnel there is a 20% reduction of fees.

For children of Methodist families, funding may be available through the Methodist Bursary Scheme.

KEY FACTS

Co-Ed
SENIOR AND SIXTH

**TERMLY,
WEEKLY,
FLEXI & DAY
Boarding**

BESPOKE 
APPROACH

Personalised GCSE
subject choice



**A WIDE RANGE OF
CO-CURRICULAR
Clubs and Activities**



Kent College
opened its
doors **1886**
140 YEARS 2026

**GCSE
Results 2025**

32%
GCSE grades
Level 9-8's

49%
GCSE grades
Level 7-9's

**A Level
Results 2025**

**66% A Level
grades A*-B**

5 IS THE
AVERAGE
CLASS SIZE
AT A LEVEL


12 IS THE AVERAGE
CLASS SIZE AT GCSE

**A TOP
SCHOOL
IN THE UK FOR
VALUE ADDED**

Students achieve
at least one grade
higher than
predicted at GCSE

SUBJECTS ON OFFER

25 GCSE
21 A LEVEL
9 BTEC'S

Campus
located close
to Royal
Tunbridge Wells and
surrounded by
75 acres of
beautiful Kent
countryside 



Head:

Miss Katrina Handford BA (Hons), MEd, PGCE

head@kentcollege.kent.sch.uk

Chair of Governors:

Mr Jeremy Nicholds

chairofgovernors@kentcollege.kent.sch.uk

Kent College
Old Church Road
Pembury
Tunbridge Wells
Kent TN2 4AX
UK

Telephone

01892 820218 (UK)

+44 (0) 1892 820218 (International)

Email

admissions@kentcollege.kent.sch.uk

www.kent-college.co.uk

